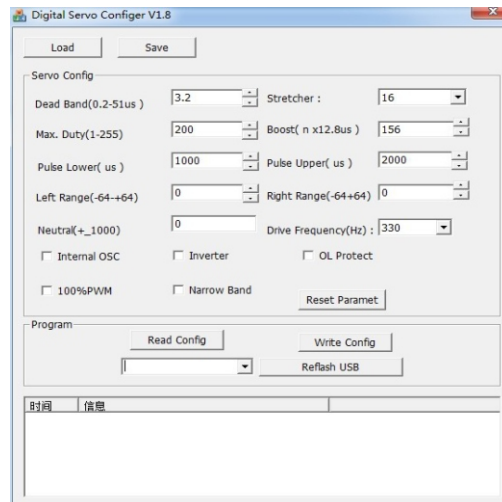


舵机编程卡使用说明书

Servo Programmer user manual

- 1: 请先从网站下载相应的软件, 下载地址如下 :<http://www.yinyanmodel.com/servo program card driver.rar>
Please download the software from here: <http://www.yinyanmodel.com/servo program card driver.rar>
- 2: 请将文件解压, 准备安装到电脑, 在安装到电脑之前请所有的杀毒软件关闭, 包括 360 安全卫士。
Expand the Zipped format file and disable the antivirus softwares before you install the software to the computer.
- 3: 打开解压的文件夹, 将 Driver 文件夹下面的 USBXpressInstaller.exe 文件打开, 按照提示一步一步的安装好。
Open the file as unzipped before, Double-click the file (named USBXpressInstaller.exe under the folder named Driver) to begin installation.
- 4: 重新启动电脑, 如果杀毒软件和 360 提示, 请信任文件和插件, 不要删除, 否则软件无法运行。
Restart the computer, please do not remove the file even if any warning pops up.
- 5: 打开软件, 可以看到界面如下:
Run the software, and you will see the interface as below:



将线的 USB 一头接入电脑, 另外一头接入舵机编程卡, 将舵机插入到按照线的顺序插入到编程卡中, 先鼠标点击 REFLASH USB, 下面会显示已经和电脑连接, 灯显示为绿色, 在对舵机编程之前请先用鼠标点击 Read config, 会显示出来这个舵机的原始程序, 为了避免你调节舵机后不能说使用, 请用鼠标点击 SAVE, 将原始程序另存, 如果你修改后舵机工作不正常, 可以点击 load, 将源程序重新载入, 然后点击 Write config, 可以回复原始程序。(运行过程中灯显示绿色为正常工作, 显示为红色为不正常, 请重新关闭软件启动并检查线是否没有接好或者方向查反, 如果总是显示不正常, 软件需要重新安装)

Connect the USB adapter to PC and the Servo Programmer, the servo MUST be connected to USB adapter correctly. (Please pay attention to the wires.) Click the "REFLASH USB" button, and the PC indicates that the servos found, and the Green LED is ON. Before you change any programming values, please choose the button "Read config" and you will see the default settings of the servo, click "Save" button to save the default settings of the servo. This is useful if there is any problem after any programming values are changed, you can resume the default settings by clicking the "load" button then "Write config" button. (The Green LED is on indicating that the programming goes on smoothly. If the Red LED is on, please turn off the software and check if the wires are connected correctly. If it the Red LED is still on, please re-install the software)

将程序读入电脑后, 请按照以下说明修改, 修改完后鼠标点击 Write config, 程序就写入进去了。

After the software is read, you can set the values according to the following instruction. Click the "Write config" button to write the program to the servo.

修改的时候不要改动太多, 慢慢熟悉软件的使用, 大家如果调整后的参数有特别针对的机型, 请发表出来与大家共享, 目前能修改的舵机是数码舵机, 型号包括 ES09D, ES09MD, ES3351, ES3352, ES9256HV, ES9257, ES9258, ES9054, ES9254, ES9255, 其余的暂时还不能修改, 后续有新项目可以修改, 我们会第一时间更新说明书。

Programmable servos: EMAX ES09D, ES09MD, ES3351, ES3352, ES9256HV, ES9257, ES9258, ES9054, ES9254, ES9255 (more new servos will be added to this list)

功能调整区:

Programming

Dead Band: 灵敏度设置 设置舵机能够响应的最小变化信号宽度, 这个用于调整舵机灵敏度, 数值越小, 舵机灵敏度越高, 反之则反之, 灵敏度过高会造成抖动和舵机寿命变短。

Dead Band is the range of signal over which the servo does not change position in response to a change in signal. The smaller the value is, the more sensitive the servo is. It will cause vibration or shorten the life for servos if this value is set too low.

Stretcher: 增益设置 设置目标位置与实际位置误差的放大比例, 此处不要做调整。

Stretcher: Please do not change this value.

Max. Duty: 最大占空比 设置电机的驱动力度, 最大值最好不要超过 245, 这一项配合 100% PWM 可以调整舵机输出扭力, 单独调试也可以调整输出扭力, 调整的时候请注意, 力度越大, 电流越大, 舵机寿命越短, 且会造成舵机抖动